



**Import and Distribution Company
of Authentic Specialty Food Products**



Olive Oil



Balsamic Vinegar



Condiments



Truffles



Pasta



Rice



Garden



Legumes & Nuts



Cured Meats



Cheeses



Caviar



Perlage



Sapori di Mare



Spices & Powders



Bakery

*Products
Catalog*

About Beca Imports

Beca Imports is an Italian family owned and operated Company. We were born and raised in Italian country side with the values of fresh and organic ingredients at their table. Beca Imports specializes in the importation of fine Italian organic products and is focused in finding the best of Italian foods from all regions of the country. Our goal is to bring Italy's finest regional artisan products to United States that satisfy any demanding palate.

We search every region of Italy to provide only authentic Italian food products characterized by freshness and natural flavors. We stand true to our values and are committed to our relationship with our suppliers to deliver premium quality products that everyone will enjoy.

Since coming to work and live in America, I saw that the people here love to experience the Italian food culture. But I saw that the food that is provided for them is not what I feel to be "authentic Italian food". Through the help of my cousin, who stills lives and works in Italy in contact with farms and local producers, we want to share with the American people the "real" Italian food experience without leaving their homes.



Luca Bellavia
Co-Founder & President

Mattia Carelli
Co-Founder & C.E.O.

Mission Statement

Our hope is to bring our exceptional blend of products from Italy, including private label brands, so they can be found in the best restaurants, supermarkets, gourmet stores and deli shops across the United States.

We want to bring the natural flavors of the Italian garden and create a bridge through the food and culture to every American table.

Because we believe that everyone should experience the freshness and beauty of the Italian food, our mission is to bring these exceptional products from our garden to your table.





Olive Oil



FINISHING EVOO
Size: 25.36 fl oz (750 ml)
Unit per case: 12



LE FERRE OLIO DI PUGLIA EVOO
Size: 2.64 gal (10 L)
Unit per case: 1

— OLIO —
EXTRAVERGINE
— D'OLIVA —



OLIO DI SICILIA EVOO
Size: 1.32 gal (5 L)
Unit per case: 4



KORA EVOO
Size: 1.32 gal (5 L)
Unit per case: 4



Olive Oil



BASIL



LEMON



PORCINI
MUSHROOMS



MANDARIN



BERGAMOT



SMOKED

LE FERRE FLAVORED EVOO
— OLIO — Size: 16.91 fl oz (500 ml)
— EXTRAVERGINE — Unit per case: 6
— D'OLIVA —



Balsamic Vinegar



¹⁶⁰⁵
GIUSTI
MODENA
**GINEPRO (JUNIPER)
CHEF'S SELECTION**
Size: 3.3 fl oz (100 ml)



¹⁶⁰⁵
GIUSTI
MODENA



BALSAMIC VINEGAR OF MODENA PGI
Size: 8.45 fl oz (250 ml)
Unit per case: 6



¹⁶⁰⁵
GIUSTI
MODENA
EXTRAVECCHIO
Size: 3.3 fl oz (100 ml)



¹⁶⁰⁵
GIUSTI
MODENA
GIUSTI 50 RESERVE
Size: 3.3 fl oz (100 ml)



¹⁶⁰⁵
GIUSTI
MODENA
GIUSTI 100 RESERVE
Size: 3.3 fl oz (100 ml)



Condiments



¹⁶⁰⁵
GIUSTI MODENA
SABA
Size: 8.4 fl oz (250 ml)
Unit per case: 6




¹⁶⁰⁵
GIUSTI MODENA
SWEET & SOUR WHITE CONDIMENT
Size: 1.32 gal (5 L)
Unit per case: 2



¹⁶⁰⁵
GIUSTI MODENA
BALSAMIC VINEGAR OF MODENA
Size: 1.32 gal (5 L)
Unit per case: 2



 **SHERRY VINEGAR**
Size: 1.32 gal (5 L)
Unit per case: 2



¹⁶⁰⁵
GIUSTI MODENA
WHITE WINE VINEGAR
Size: 1.32 gal (5 L)
Unit per case: 2



¹⁶⁰⁵
GIUSTI MODENA
RED WINE VINEGAR
Size: 1.32 gal (5 L)
Unit per case: 2



Condiments



BALSAMIC GLAZE

Classic – Figs – Raspberry

Size: 16.91 fl oz (500 ml)

Unit per case: 6



SWEET & SOUR FRUIT CONDIMENTS

Apple – Figs – Pomegranate – Raspberry - Ginger

Size: 8.45 fl oz (250 ml)

Unit per case: 6



Truffles



HOT & SPICY WHITE TRUFFLE HONEY
Size: 8.11 oz (230 g)



WHITE TRUFFLE HONEY MUSTARD
Size: 12.70 oz (360 g)



WHITE TRUFFLE EVOO
Size: 8.45 fl oz (250 ml)
Unit per case: 6



BLACK TRUFFLE EVOO
Size: 8.45 fl oz (250 ml)
Unit per case: 6



WHITE TRUFFLE SUNFLOWER OIL
Size: 0.79 gal (3 L)
Unit per case: 6



Truffles



TRUFFLE CRUMBLE
Size: 9.17 oz (260 g)
Unit per case: 4



BLACK SUMMER TRUFFLE PEELINGS
Size: 8.8 oz (250 g)
Unit per case: 6



WHITE TRUFFLE BUTTER
Size: 10.59 oz (300 g)
Unit per case: 6



BLACK TRUFFLE BUTTER
Size: 10.59 oz (300 g)
Unit per case: 6



LA TARTUFATA
Size: 17.6 oz (500 g)
Unit per case: 6



Pasta



SPAGHETTINI

Size: 10 lb (4.54 Kg)
Unit per case: 2



BUCATINI

Size: 10 lb (4.54 Kg)
Unit per case: 2



LINGUINE

Size: 10 lb (4.54 Kg)
Unit per case: 2



PENNE RIGATE

Size: 10 lb (4.54 Kg)
Unit per case: 2



CAVATAPPI

Size: 10 lb (4.54 Kg)
Unit per case: 2



LUMACHE

Size: 10 lb (4.54 Kg)
Unit per case: 2



MEZZE MANICHE

Size: 10 lb (4.54 Kg)
Unit per case: 2



Pasta



RIGATONE ROMANO
Size: 1.1 lb (500 g)
Unit per case: 12



ORECCHIETTE PUGLIESI
Size: 2.2 lb (1 kg)
Unit per case: 6



FREGOLA SARDA
Size: 1.1 lb (500 g)
Unit per case: 12



**FARRO
DITALINI**
Size: 1.1 lb (500 g)
Unit per case: 12



**GLUTEN FREE
SPAGHETTI**
Size: 12 oz (340 g)
Unit per case: 12



**GLUTEN FREE
PENNE RIGATE**
Size: 10 lb (4.54 kg)
Unit per case: 1



Rice



CARNAROLI GRAN RISERVA

Size: 2.2 lb (1 kg)
Unit per case: 10



VIALONE NANO

Size: 2.2 lb (1 kg)
Unit per case: 12



ARBORIO

Size: 2.2 lb (1 kg)
Unit per case: 12



ARTEMIDE GRAN RISERVA

Size: 2.2 lb (1 kg)
Unit per case: 10



Garden



ANTIPASTI SICILIANI
RIZZO
1940
**MARINATED SUN-DRIED
TOMATOES**
NET WT: 6.6 lb (3 kg)



ANTIPASTI SICILIANI
RIZZO
1940
**MARINATED SEMI-DRIED
CHERRY TOMATOES**
NET WT: 6.6 lb (3 kg)



ANTIPASTI SICILIANI
RIZZO
1940
PORCINI MUSHROOMS
NET WT: 6.6 lb (3 kg)



ANTIPASTI SICILIANI
RIZZO
1940
CALABRIAN CHILI PEPPERS SPREAD
NET WT: 6.6 lb (3 kg)



ANTIPASTI SICILIANI
RIZZO
1940
MARINATED MIXED MUSHROOMS
NET WT: 6.6 lb (3 kg)



Garden



Contadini **PUNTARELLE**
NET WT: 3.3 lb (1.5 kg)



AGNONI **BALSAMIC ONIONS**
Acquisto Agricola Fiorentino
NET WT: 3.5 lb (1.6 kg)



AGNONI **BROCCOLI RABE**
Acquisto Agricola Fiorentino
NET WT: 3.5 lb (1.6 kg)



UMAMI **BLACK GARLIC**
Size: 1 lb (454 g)



AGNONI **ARTICHOKES WITH STEM**
Acquisto Agricola Fiorentino
NET WT: 6.8 lb (3.1 kg)



ANTIPASTI SICILIANI
RIZZO **MARINATED QUARTERED ARTICHOKES**
NET WT: 6.6 lb (3 kg)



Garden



ANTIPASTI SICILIANI
RIZZO
**PITTED
TAGGIASCA OLIVES**
NET WT: 6.6 lb (3 kg)



ANTIPASTI SICILIANI
RIZZO
**QUEEN PITTED
GREEN OLIVES**
NET WT: 6.6 lb (3 kg)



ANTIPASTI SICILIANI
RIZZO
**PITTED
CASTELVETRANO OLIVES**
NET WT: 6.6 lb (3 kg)



ANTIPASTI SICILIANI
RIZZO
**MARINATED WHOLE
MIXED OLIVES**
NET WT: 6.6 lb (3 kg)



ANTIPASTI SICILIANI
RIZZO
**MARINATED PITTED
MIXED OLIVES**
NET WT: 6.6 lb (3 kg)



Garden



**CANDIED PANTELLERIA
CAPERS**

Size: 46 oz (1.3 kg)



**CANDIED DATTERINO
TOMATO**

Size: 46 oz (1.3 kg)



**DATTERINO TOMATO
WATER**

Size: 24.34 fl oz (720 ml)

Unit per case: 8



CAPER BERRIES

NET WT: 6.6 lb (3 kg)



CAPERS IN BRINE

NET WT: 6.6 lb (3 kg)



CAPERS IN SEA SALT

NET WT: 4.4 lb (2 kg)



Legumes & Nuts



SHELLED SICILIAN PISTACHIO

Size: 2.2 lb (1 kg)



POLENTA

Size: 1 lb (454 g)

Unit per case: 12



CANNELLINI BEANS

Size: 11 lb (5 Kg)



PURGATORY BEANS

Size: 11 lb (5 Kg)



RAW WHOLE ALMONDS

Size: 2.2 lb (1 kg)



RAW SLICED ALMONDS

Size: 2.2 lb (1 kg)



RAW MARCONA ALMONDS

Size: 11 lb (5 kg)



Cured Meats



PROSCIUTTO DI PARMA
Size: 16 lb (7.2 kg) approx.



PROSCIUTTO DI PARMA
Size: 16 lb (7.2 kg) approx.



PROSCIUTTO DI PARMA
Size: 16 lb (7.2 kg) approx.



PROSCIUTTO ITALIANO (SLICED)
Size: 1 lb (454 g)



COOKED HAM
Size: 17 lb (7.7 kg) approx.



PROSCIUTTO SAN DANIELE
Size: 16 lb (7.2 kg) approx.



Cured Meats



**100% IBERICO BELLOTA HAM
HAND CARVED & WHOLE BONE-IN**
Size: 1.5 oz - 2.5 oz - 4 oz - 10 oz
Size: 17.6 lb (8 kg) approx.



**JAMÓN SERRANO HAM
BONELESS**
Size: 12 lb (5.5 kg) approx.



LARDO IBERICO
Size: 1.5 lb (680 g) approx.



Cured Meats



GUANCIALE

Size: 3 lb (1.4 kg) approx.



MORTADELLA

Size: 11 lb (5 kg) approx.



COPPA

Size: 3 lb (1.4 kg) approx.



SPECK ALTO ADIGE IGP

Size: 5.5 lb (2.5 kg) approx.



Cured Meats



NDUJA
Size: 1 lb (454 g) approx.



FINOCCHIONA
Size: 5.5 lb (2.5 kg) approx.



SALAME EMILIA SPICY
Size: 3.3 lb (1.5 kg) approx.



SALAME NAPOLI
Size: 3.3 lb (1.5 kg) approx.



Cheeses



PARMIGIANO REGGIANO DOP
Size: 1/4 - 22 lb (10 kg) approx.



GRANA PADANO
Size: 1/4 - 22 lb (10 kg) approx.



UBRIACONE
Size: 5.5 lb (2.5 kg) approx.



FONTAL
Size: 6 lb (2.7 kg) approx.



GORGONZOLA DOLCE DOP
Size: 4 lb (1.8 kg) approx.



Cheeses



PRIMOSALE TARTUFO DOP
Size: 5.5 lb (2.5 kg) approx.



PECORINO ROMANO DOP
Size: 1/4 - 15 lb (7 kg) approx.



PECORINO TOSCANO DOP
Size: 5.5 lb (2.5 kg) approx.



PRIMOSALE PISTACHIO DOP
Size: 5.5 lb (2.5 kg) approx.



PRIMOSALE CHILI PEPPER DOP
Size: 5.5 lb (2.5 kg) approx.



PRIMOSALE PEPATO DOP
Size: 5.5 lb (2.5 kg) approx.



Cheeses




 **CASTELROSSO**
Size: 8 lb (3.6 kg) approx.




 **RICOTTA SALATA**
Size: 5.5 lb (2.5 kg) approx.




 **CACIO DE ROMA**
Size: 4 lb (1.8 kg) approx.



 **TALEGGIO DOP**
Size: 5.5 lb (2.5 kg) approx.



 **SOTTOCENERE AL TARTUFO**
Size: 7 lb (3.2 kg) approx.



Cheeses



MEMBRILLO (QUINCE PASTE)

Size: 5 lb (2.25 kg) approx.



MAHON DOP

Size: 6 lb (2.7 kg) approx.



THE DRUNKEN GOAT CHEESE

Size: 5.5 lb (2.5 kg) approx.



MANCHEGO CORCUERA DOP

Size: 5.5 lb (2.5 kg) approx.



MANCHEGO AURORA DOP

Size: 5.5 lb (2.5 kg) approx.



IDIAZABAL DOP (SMOKED)

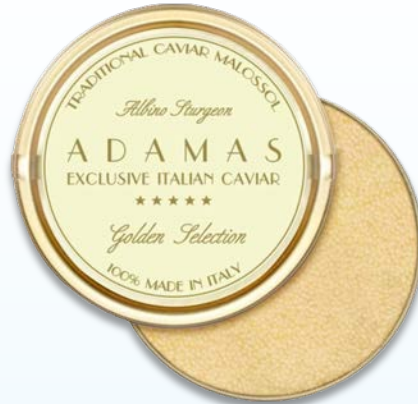
Size: 7 lb (3.2 kg) approx.



Caviar



ADAMAS EXCLUSIVE ITALIAN CAVIAR ***** PREMIUM BELUGA



ADAMAS EXCLUSIVE ITALIAN CAVIAR ***** ALBINO STURGEON



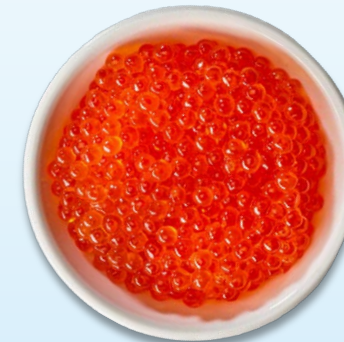
ADAMAS EXCLUSIVE ITALIAN CAVIAR ***** OSSETRA STURGEON



ADAMAS EXCLUSIVE ITALIAN CAVIAR ***** SIBERIAN STURGEON



ADAMAS EXCLUSIVE ITALIAN CAVIAR ***** WHITE STURGEON



EMESCO SPECIALTY FOODS SMOKED TROUT ROE



Perlage



1605
GIUSTI
MODENA
BALSAMIC PEARLS
Size: 1.76 oz (50 g)
Unit per case: 6



Terra di Nono
BALSAMIC SPHERE
Size: 2.64 oz (75 g)
Unit per case: 6



Tartuflanghe
FAMILY COMPANY SINCE 1975
BLACK TRUFFLE PEARLS
Size: 7.05 oz (200 g)



Tartuflanghe
FAMILY COMPANY SINCE 1975
ANCHOVY PEARLS
Size: 7.05 oz (200 g)



Tartuflanghe
FAMILY COMPANY SINCE 1975
PESTO PEARLS
Size: 7.05 oz (200 g)



Tartuflanghe
FAMILY COMPANY SINCE 1975
SALMON PEARLS
Size: 7.05 oz (200 g)



Sapori di Mare



BOTTARGA MULLET ROE WHOLE
Size: 4 oz (115 g)



**COLATURA DI GAMBERO
RED SHRIMP SAUCE**
Size: 6.7 fl oz (200 ml)



**COLATURA DI ALICI
ANCHOVY SAUCE**
Size: 16.91 fl oz (500 ml)



ANCHOVY PASTE
Size: 2.12 oz (60 g)
Unit per case: 15



ANCHOVY FILLETS EVOO
Size: 24.69 oz (700 g)
Unit per case: 6



MARINATED WHITE ANCHOVIES
Size: 2.2 lb (1 kg)
Unit per case: 4



Spices & Powders



ANTIPASTI SICILIANI
RIZZO
SICILIAN OREGANO
Size: 7.05 oz (200 g)



ANTIPASTI SICILIANI
RIZZO
CRUSHED CHILI PEPPERS
Size: 14.11 oz (400 g)



ANTIPASTI SICILIANI
RIZZO
WILD FORAGED FENNEL POLLEN
Size: 3.53 oz (100 g)



PachinEat
TOMATO POWDER
Size: 1 lb (454 g)



PachinEat
LEMON POWDER
Size: 1 lb (454 g)



PachinEat
BEET POWDER
Size: 1 lb (454 g)



Bakery



ALMOND PASTE
Size: 6.6 lb (3 kg)



PISTACHIO PASTE
Size: 6.6 lb (3 kg)



HAZELNUT PASTE
Size: 6.6 lb (3 kg)



Bakery



Contadini

TARALLI CLASSICI
Size: 8.8 oz (250 g)
Unit per case: 10



SICILIAN CANNOLI SHELLS (LARGE)
Size: 8.2 lb (3.7 kg)
Unit per case: 110



SICILIAN CANNOLI SHELLS (SMALL)
Size: 6.6 lb (3 kg)
Unit per case: 250



PISTACHIO SPREAD
Size: 6.6 lb (3 kg)

Our Partners

ADAMAS
EXCLUSIVE ITALIAN CAVIAR
★★★★★

1605
GIUSTI
MODENA



Arke
oliodiSicilia



LE FERRE
— OLIO —
EXTRAVERGINE
— D'OLIVA —



PachinEat



Our Partners



COLATURA DI GAMBERO®



Our Partners





**Import and Distribution Company
of Authentic Specialty Food Products**

**8268 Lehigh Ave
Morton Grove, IL 60053**

orders@becaimports.com

www.becaimports.com



@becaimportsllc