



**Import and Distribution Company  
of Authentic Specialty Food Products**



*Olive Oil*



*Balsamic Vinegar*



*Condiments*



*Truffles*



*Pasta*



*Rice & Flour*



*Garden*



*Legumes & Nuts*



*Cured Meats*



*Cheeses*



*Caviar*



*Perlage*



*Sapori di Mare*



*Powders*



*Bakery*

*Products  
Catalog*

## *About Beca Imports*

Beca Imports is an Italian family owned and operated Company. We were born and raised in Italian country side with the values of fresh and organic ingredients at their table. Beca Imports specializes in the importation of fine Italian organic products and is focused in finding the best of Italian foods from all regions of the country. Our goal is to bring Italy's finest regional artisan products to United States that satisfy any demanding palate.

We search every region of Italy to provide only authentic Italian food products characterized by freshness and natural flavors. We stand true to our values and are committed to our relationship with our suppliers to deliver premium quality products that everyone will enjoy.

Since coming to work and live in America, I saw that the people here love to experience the Italian food culture. But I saw that the food that is provided for them is not what I feel to be "authentic Italian food". Through the help of my cousin, who stills lives and works in Italy in contact with farms and local producers, we want to share with the American people the "real" Italian food experience without leaving their homes.



**Luca Bellavia**  
**Co-Founder & President**

**Mattia Carelli**  
**Co-Founder & C.E.O.**

## *Mission Statement*

Our hope is to bring our exceptional blend of products from Italy, including private label brands, so they can be found in the best restaurants, supermarkets, gourmet stores and deli shops across the United States.

We want to bring the natural flavors of the Italian garden and create a bridge through the food and culture to every American table.

Because we believe that everyone should experience the freshness and beauty of the Italian food, our mission is to bring these exceptional products from our garden to your table.





## Olive Oil



*Arke*  
oliodiSicilia

**FINISHING EVOO**  
Size: 25.36 fl oz (750 ml)  
Unit per case: 12



**LE FERRE** **OLIO DI PUGLIA EVOO**  
— OLIO —  
EXTRAVERGINE  
— D'OLIVA —  
Size: 2.64 gal (10 L)  
Unit per case: 1



**OLIO DI SICILIA EVOO**  
Size: 1.32 gal (5 L)  
Unit per case: 4



*Arke*  
oliodiSicilia

**KORA EVOO**  
Size: 1.32 gal (5 L)  
Unit per case: 4



## Olive Oil



BASIL



LEMON



PORCINI  
MUSHROOMS



MANDARIN



BERGAMOT



SMOKED

**LE FERRE** FLAVORED EVOO  
— OLIO —  
EXTRAVERGINE  
— D'OLIVA —  
Size: 16.91 fl oz (500 ml)  
Unit per case: 6



# Balsamic Vinegar



1605  
**GIUSTI**  
MODENA

**GINEPRO (JUNIPER)  
CHEF'S SELECTION**  
Size: 3.3 fl oz (100 ml)



1605  
**GIUSTI**  
MODENA

**BALSAMIC VINEGAR OF MODENA PGI**  
Size: 8.45 fl oz (250 ml)  
Unit per case: 6



1605  
**GIUSTI**  
MODENA

**EXTRAVECCHIO**  
Size: 3.3 fl oz (100 ml)



1605  
**GIUSTI**  
MODENA

**GIUSTI 50 RESERVE**  
Size: 3.3 fl oz (100 ml)



1605  
**GIUSTI**  
MODENA

**GIUSTI 100 RESERVE**  
Size: 3.3 fl oz (100 ml)



## Condiments



**SABA**  
Size: 6.76 fl oz (200 ml)  
Unit per case: 6



**SHERRY VINEGAR**  
Size: 1.32 gal (5 L)  
Unit per case: 2



**SWEET & SOUR WHITE CONDIMENT**  
Size: 1.32 gal (5 L)  
Unit per case: 2



**WHITE WINE VINEGAR**  
Size: 1.32 gal (5 L)  
Unit per case: 2



**BALSAMIC VINEGAR OF MODENA**  
Size: 1.32 gal (5 L)  
Unit per case: 2



**RED WINE VINEGAR**  
Size: 1.32 gal (5 L)  
Unit per case: 2



## Condiments



### BALSAMIC GLAZE

Classic – Figs – Raspberry

Size: 16.91 fl oz (500 ml)

Unit per case: 6



1605  
**GIUSTI**  
MODENA

### SWEET & SOUR FRUIT CONDIMENTS

Apple – Figs – Pomegranate – Raspberry - Ginger

Size: 8.45 fl oz (250 ml)

Unit per case: 6



# Truffles



**HOT & SPICY WHITE TRUFFLE HONEY**  
Size: 8.11 oz (230 g)



**WHITE TRUFFLE HONEY MUSTARD**  
Size: 12.70 oz (360 g)



**WHITE TRUFFLE EVOO**  
Size: 8.45 fl oz (250 ml)  
Unit per case: 6



**BLACK TRUFFLE EVOO**  
Size: 8.45 fl oz (250 ml)  
Unit per case: 6



**WHITE TRUFFLE SUNFLOWER OIL**  
Size: 0.79 gal (3 L)  
Unit per case: 6



# Truffles



**TRUFFLE CRUMBLE**  
Size: 9.17 oz (260 g)  
Unit per case: 4



**BLACK SUMMER TRUFFLE PEELINGS**  
Size: 8.8 oz (250 g)  
Unit per case: 6



**WHITE TRUFFLE BUTTER**  
Size: 10.59 oz (300 g)  
Unit per case: 6



**BLACK TRUFFLE BUTTER**  
Size: 10.59 oz (300 g)  
Unit per case: 6



**LA TARTUFATA**  
Size: 17.6 oz (500 g)  
Unit per case: 6



# Pasta



## SPAGHETTINI

Size: 10 lb (4.54 Kg)  
Unit per case: 2



## BUCATINI

Size: 10 lb (4.54 Kg)  
Unit per case: 2



## LINGUINE

Size: 10 lb (4.54 Kg)  
Unit per case: 2



## PENNE RIGATE

Size: 10 lb (4.54 Kg)  
Unit per case: 2



## CAVATAPPI

Size: 10 lb (4.54 Kg)  
Unit per case: 2



## LUMACHE

Size: 10 lb (4.54 Kg)  
Unit per case: 2



## MEZZE MANICHE

Size: 10 lb (4.54 Kg)  
Unit per case: 2



## Pasta



### RIGATONE ROMANO

Size: 1.1 lb (500 g)

Unit per case: 12



### FARRO DITALINI

Size: 1.1 lb (500 g)

Unit per case: 12



### ORECCHIETTE PUGLIESI

Size: 2.2 lb (1 kg)

Unit per case: 6



### GLUTEN FREE SPAGHETTI

Size: 12 oz (340 g)

Unit per case: 12



### FREGOLA SARDA

Size: 1.1 lb (500 g)

Unit per case: 12



### GLUTEN FREE PENNE RIGATE

Size: 10 lb (4.54 kg)

Unit per case: 1



## Rice & Flour



### ARBORIO

Size: 2.2 lb (1 kg)

Unit per case: 12



### VIALONE NANO

Size: 2.2 lb (1 kg)

Unit per case: 12



### CARNAROLI GRAN RISERVA

Size: 2.2 lb (1 kg)

Unit per case: 10



### ARTEMIDE GRAN RISERVA

Size: 2.2 lb (1 kg)

Unit per case: 10



### CARNAROLI FLOUR

Size: 1.1 lb (500 g)

Unit per case: 16



## *Garden*



ANTIPASTI SICILIANI  
**RIZZO**  
**MARINATED SUN-DRIED  
TOMATOES**  
NET WT: 6.6 lb (3 kg)



ANTIPASTI SICILIANI  
**RIZZO**  
**MARINATED SEMI-DRIED  
CHERRY TOMATOES**  
NET WT: 6.6 lb (3 kg)



ANTIPASTI SICILIANI  
**RIZZO**  
**PORCINI MUSHROOMS**  
NET WT: 6.6 lb (3 kg)



ANTIPASTI SICILIANI  
**RIZZO**  
**CALABRIAN CHILI PEPPERS SPREAD**  
NET WT: 6.6 lb (3 kg)



ANTIPASTI SICILIANI  
**RIZZO**  
**MARINATED MIXED MUSHROOMS**  
NET WT: 6.6 lb (3 kg)



## Garden



*Contadini*

**PUNTARELLE**  
NET WT: 3.3 lb (1.5 kg)



**AGNOLI**  
Azienda Agricola Frantoio

**BALSAMIC ONIONS**  
NET WT: 3.5 lb (1.6 kg)



**AGNOLI**  
Azienda Agricola Frantoio

**BROCCOLI RABE**  
NET WT: 3.5 lb (1.6 kg)



**AGNOLI**  
Azienda Agricola Frantoio

**ARTICHOKES WITH STEM**  
NET WT: 6.4 lb (2.9 kg)



**AGNOLI**  
Azienda Agricola Frantoio

**ARTICHOKES HEARTS**  
NET WT: 3.5 lb (1.6 kg)



ARTIPASTI SICILIANI  
**RIZZO**  
1980

**MARINATED QUARTERED ARTICHOKES**  
NET WT: 6.6 lb (3 kg)



## *Garden*



ANTIPASTI SICILIANI  
**RIZZO**  
— 8040 —

**PITTED  
TAGGIASCA OLIVES**  
NET WT: 6.6 lb (3 kg)



ANTIPASTI SICILIANI  
**RIZZO**  
— 8040 —

**QUEEN PITTED  
GREEN OLIVES**  
NET WT: 6.6 lb (3 kg)



ANTIPASTI SICILIANI  
**RIZZO**  
— 8040 —

**PITTED  
CASTELVETRANO OLIVES**  
NET WT: 6.6 lb (3 kg)



ANTIPASTI SICILIANI  
**RIZZO**  
— 8040 —

**MARINATED WHOLE  
MIXED OLIVES**  
NET WT: 6.6 lb (3 kg)



ANTIPASTI SICILIANI  
**RIZZO**  
— 8040 —

**MARINATED PITTED  
MIXED OLIVES**  
NET WT: 6.6 lb (3 kg)



## *Garden*



### **CANDIED PANTELLERIA CAPERS**

Size: 46 oz (1.3 kg) jar



### **CANDIED DATTERINO TOMATO**

Size: 46 oz (1.3 kg) jar



### **DATTERINO TOMATO WATER**

Size: 24.34 fl oz (720 ml)

Unit per case: 8



ANTIPASTI SICILIANI  
**RIZZO**  
— 1040 —

### **CAPER BERRIES**

NET WT: 6.6 lb (3 kg)



ANTIPASTI SICILIANI  
**RIZZO**  
— 1040 —

### **CAPERS IN BRINE**

NET WT: 6.6 lb (3 kg)



ANTIPASTI SICILIANI  
**RIZZO**  
— 1040 —

### **CAPERS IN SEA SALT**

NET WT: 4.4 lb (2 kg)



## Garden



**MEMBRILLO (QUINCE PASTE)**  
Size: 5 lb (2.25 kg) approx.



**WILD FENNEL POLLEN**  
Size: 3.53 oz (100 g)



**BLACK GARLIC**  
Size: 1 lb (454 g)



**SICILIAN OREGANO**  
Size: 7.05 oz (200 g)



**CRUSHED CHILI PEPPERS**  
Size: 14.11 oz (400 g)



**GROUND BLACK OLIVES**  
Size: 1 lb (454 g)



## *Legumes & Nuts*



**SHELLED SICILIAN PISTACHIO**

Size: 2.2 lb (1 kg)



**POLENTA**

Size: 1 lb (454 g)

Unit per case: 12



**CANNELLINI BEANS**

Size: 11 lb (5 Kg)



**PURGATORY BEANS**

Size: 11 lb (5 Kg)



**RAW WHOLE ALMONDS**

Size: 2.2 lb (1 kg)



**RAW SLICED ALMONDS**

Size: 2.2 lb (1 kg)



**RAW MARCONA ALMONDS**

Size: 11 lb (5 kg)



## Cured Meats



**PROSCIUTTO DI PARMA**  
Size: 16 lb (7.2 kg) approx.



**PROSCIUTTO DI PARMA**  
Size: 16 lb (7.2 kg) approx.



**PROSCIUTTO DI PARMA**  
Size: 16 lb (7.2 kg) approx.



**PROSCIUTTO ITALIANO (SLICED)**  
Size: 1 lb (454 g)



**COOKED HAM**  
Size: 17 lb (7.7 kg) approx.



**PROSCIUTTO SAN DANIELE**  
Size: 16 lb (7.2 kg) approx.



## *Cured Meats*



**100% IBERICO BELLOTA HAM  
HAND CARVED & WHOLE BONE-IN**

Size: 1.5 oz - 2.5 oz - 4 oz - 10 oz

Size: 17.6 lb (8 kg) approx.



**JAMÓN SERRANO HAM  
BONELESS**

Size: 12 lb (5.5 kg) approx.



**LARDO IBERICO**

Size: 1.5 lb (680 g) approx.



## *Cured Meats*



**GUANCIALE**

Size: 3 lb (1.4 kg) approx.



**MORTADELLA**

Size: 11 lb (5 kg) approx.



**COPPA**

Size: 3 lb (1.4 kg) approx.



**SPECK ALTO ADIGE IGP**

Size: 5.5 lb (2.5 kg) approx.



## *Cured Meats*



**SALAME EMILIA SPICY**  
Size: 3.3 lb (1.5 kg) approx.



**SALAME NAPOLI**  
Size: 3.3 lb (1.5 kg) approx.



**FINOCCHIONA**  
Size: 5.5 lb (2.5 kg) approx.



**SALAME GENOA**  
Size: 3.3 lb (1.5 kg) approx.



## *Cheeses*



**PARMIGIANO REGGIANO DOP**  
Size: 1/4 - 22 lb (10 kg) approx.



**GRANA PADANO**  
Size: 1/4 - 22 lb (10 kg) approx.



**UBRIACONE**  
Size: 5.5 lb (2.5 kg) approx.



**FONTAL**  
Size: 6 lb (2.7 kg) approx.



**GORGONZOLA DOLCE DOP**  
Size: 4 lb (1.8 kg) approx.



## *Cheeses*



**PRIMOSALE TARTUFO DOP**  
Size: 5.5 lb (2.5 kg) approx.



**PECORINO ROMANO DOP**  
Size: 1/4 - 15 lb (7 kg) approx.



**PECORINO TOSCANO DOP**  
Size: 5.5 lb (2.5 kg) approx.



**PRIMOSALE PISTACHIO DOP**  
Size: 5.5 lb (2.5 kg) approx.



**PRIMOSALE CHILI PEPPER DOP**  
Size: 5.5 lb (2.5 kg) approx.



**PRIMOSALE PEPATO DOP**  
Size: 5.5 lb (2.5 kg) approx.



## *Cheeses*



**TALEGGIO DOP**

Size: 5.5 lb (2.5 kg) approx.



**SOTTOCENERE AL TARTUFO**

Size: 7 lb (3.2 kg) approx.



**CASTELROSSO**

Size: 8 lb (3.6 kg) approx.



**RICOTTA SALATA**

Size: 5.5 lb (2.5 kg) approx.



## *Cheeses*



**TETILLA DOP**  
Size: 2 lb (1 kg) approx.



**MAHON DOP**  
Size: 6 lb (2.7 kg) approx.



**THE DRUNKEN GOAT CHEESE**  
Size: 5.5 lb (2.5 kg) approx.



**MANCHEGO CORCUERA DOP**  
Size: 5.5 lb (2.5 kg) approx.



**MANCHEGO AURORA DOP**  
Size: 5.5 lb (2.5 kg) approx.



**IDIAZABAL DOP (SMOKED)**  
Size: 7 lb (3.2 kg) approx.



# Caviar



**PREMIUM BELUGA**



**ALBINO STURGEON**



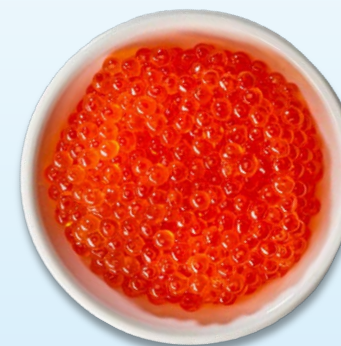
**OSSETRA STURGEON**



**SIBERIAN STURGEON**



**WHITE STURGEON**



**SMOKED TROUT ROE**



## Perlage



1605  
**GIUSTI**  
MODENA

**BALSAMIC PEARLS**  
Size: 1.76 oz (50 g)  
Unit per case: 6



**ANCHOVY PEARLS**  
Size: 7.05 oz (200 g)



**BALSAMIC SPHERE**  
Size: 2.64 oz (75 g)  
Unit per case: 6



**PESTO PEARLS**  
Size: 7.05 oz (200 g)



**BLACK TRUFFLE PEARLS**  
Size: 7.05 oz (200 g)



**SALMON PEARLS**  
Size: 7.05 oz (200 g)



## *Sapori di Mare*



### **BOTTARGA MULLET ROE WHOLE**

Size: 4 oz (115 g)



### **COLATURA DI GAMBERO RED SHRIMP SAUCE**

Size: 6.7 fl oz (200 ml)



### **COLATURA DI ALICI ANCHOVY SAUCE**

Size: 16.91 fl oz (500 ml)



### **ANCHOVY PASTE**

Size: 2.12 oz (60 g)

Unit per case: 15



### **ANCHOVY FILLETS EVOO**

Size: 24.69 oz (700 g)

Unit per case: 6



### **ANCHOVY MARINATED**

Size: 2.2 lb (1 kg)

Unit per case: 4



## Powders



**PESTO POWDER**  
Size: 1.06 oz (30 g)



**WHITE TRUFFLE POWDER**  
Size: 2.12 oz (60 g)



**PORCINI POWDER**  
Size: 1.76 oz (50 g)



**TOMATO POWDER**  
Size: 1 lb (454 g)



**LEMON POWDER**  
Size: 1 lb (454 g)



**BEET POWDER**  
Size: 1 lb (454 g)



## *Bakery*



**ALMOND PASTE**  
Size: 6.6 lb (3 kg)



**PISTACHIO PASTE**  
Size: 6.6 lb (3 kg)



**HAZELNUT PASTE**  
Size: 6.6 lb (3 kg)



# Bakery



*Contadini*

## TARALLI CLASSICI

Size: 8.8 oz (250 g)

Unit per case: 10



## SICILIAN CANNOLI SHELLS (LARGE)

Size: 8.2 lb (3.7 kg)

Unit per case: 110



## SICILIAN CANNOLI SHELLS (SMALL)

Size: 6.6 lb (3 kg)

Unit per case: 250



## PISTACHIO SPREAD

Size: 6.6 lb (3 kg)

## *Our Partners*

ADAMAS  
EXCLUSIVE ITALIAN CAVIAR  
★★★★★

1605  
**GIUSTI**  
MODENA



*Arke*  
oliodiSicilia



**LE FERRE**  
— OLIO —  
EXTRAVERGINE  
— D'OLIVA —



 PachinEat

**Tartuf Langhe**  
FAMILY COMPANY SINCE 1975

## Our Partners



## *Our Partners*





**Import and Distribution Company  
of Authentic Specialty Food Products**

**8268 Lehigh Ave  
Morton Grove, IL 60053**

**[orders@becaimports.com](mailto:orders@becaimports.com)**

**[www.becaimports.com](http://www.becaimports.com)**



**[@becaimportsllc](#)**